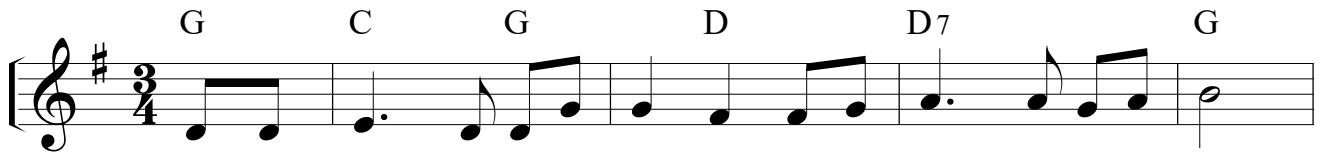


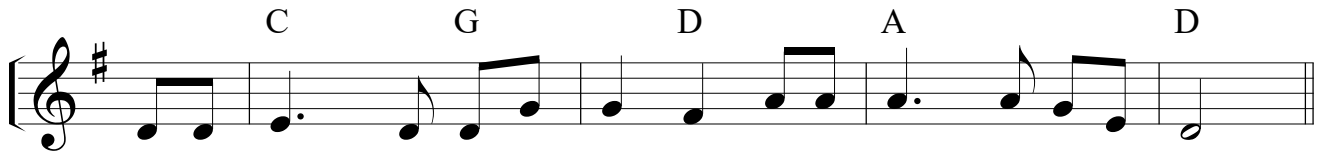
A IGREJA — SUA EDIFICAÇÃO

8.7.8.7.D

848*



1. Deus cha - mou - me sa - cer - do - te, Oh, que bên - ção e mer - cê!

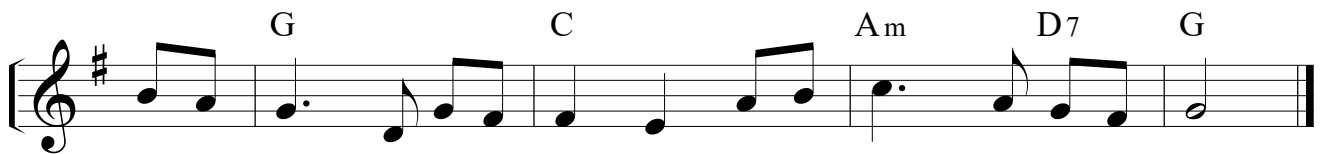


E tal san - to, ré-gio/o - fi - cio De - vo ho - je e - xer - cer.

CORO



É pre - ci - so sa - cer - dó - cio Pa - ra/a e - di - fi - ca - ção;



No es - pí - ri - to o - ran - do Cum - pri - rei es - sa fun - ção.